

BELLPORT BAY YACHT CLUB

2004 Invitational Regatta Sailing Instructions



1. ENTRIES

Eligible boats may enter by completing and filing a registration form with the BBYC registration committee no later than 1 hr. before the first Warning Signal. An eligible competitor is any member in good standing of a GSBYRA Yacht Club or an invited guest of BBYC.

2. DISCLAIMER OF LIABILITY

Competitors participate in the regatta entirely at their own risk. See Rule 4, Decision to Race. The Bellport Bay Yacht Club, Officers, and Members will not accept any liability for material damage or personal injury or death sustained in conjunction with or prior to, during, or after the regatta.

3. **NOTICES TO COMPETITORS AND CHANGES IN SAILING INSTRUCTIONS** will be posted on the official notice board located in the north entry hall of Bellport Yacht Club. **Group 2 and 3 boats** should see the appropriate **Supplemental Instructions** available at registration.

4. NUMBER AND SCHEDULE OF RACES

PHRF warning times:	Saturday, September 4	10:00 and 13:30
All other group 1 boats warning times	Sunday, September 5	10:00
will follow the PHRF starts in accordance with their class flag	Monday, September 6	10:00

Warning times for Groups 2 and 3 boats:	Saturday, September 4	10:30 Skippers meeting, race to follow
Group 2 and 3 boats will have their own race courses.	Sunday, September 5	10:30
	Monday, September 6	10:30

Queen of The Bay	Sunday, September 5	14:00
------------------	---------------------	-------

Races abandoned by the race Committee, will not be re-sailed

5. RULES

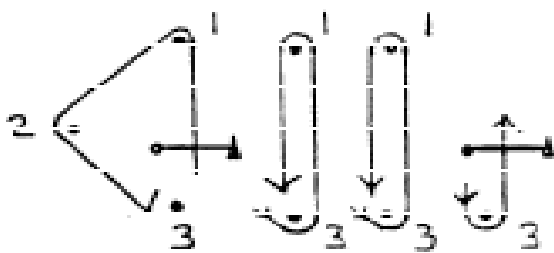
- 5.1 This regatta will be governed by the Racing Rules of Sailing, 2001-2004 of the United States Sailing Association, the rules of the classes racing in this regatta, and by these Sailing Instructions. Boats shall strictly meet their class rules and all criteria on which their 2004 SBCC Portsmouth or 2004 SBCC PHRF handicap is based. .
- 5.2 Handicapping will be done using the PHRF system, based upon handicaps determined by the **BBYC** handicap committee. Life jackets are to be worn by single-handed sailors and by all competitors age 17 and under at all times while racing.
- 5.3 The **“Start Finish Line”** will be considered an obstruction on the course and may not be re-crossed once a boat has properly started until they are ready to finish. The penalty is disqualification, and the boat may not correct its error. This modifies Rule 28.2.
- 5.4 **No other races will be scheduled during the “Queen of the Bay” race.**

6. SIGNALS MADE ASHORE WILL BE DISPLAYED ON THE FLAGPOLE IN FRONT OF THE CLUB

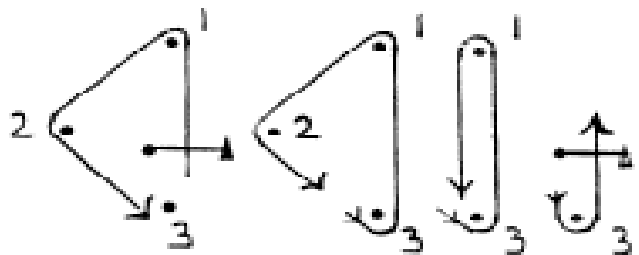
- 6.1 Code flag "N" over "H" with 3 sound signals means ALL GROUPS abandon race and REMAIN ON SHORE.
- 6.2 Code flag "N" over "2" with 3 sound signals means GROUPS 2 and 3 abandon race and REMAIN ON SHORE.
- 6.3 Code flag "N" over "3" with 3 sound signals means GROUP 3 abandon race and REMAIN ON SHORE.
- 6.4 Code flag "AP" over "H" with 2 sound signals means race postponed. When lowered with 1 sound signal, leave shore for start sequence. This modifies Rule 27.3
- 6.5 Code flag "L" (YELLOW AND BLACK) means a notice to competitors has been posted.
- 6.6 **Group 1 boats are:** PHRF spinnaker and non spinnaker, Narrasketuck, Mono-hull Handicap, Flying Scotts, Sunfish and Multi-hull Handicap.
Group 2 boats are: 420s, Lasers, Laser Radials and JY15s
Group 3 boats are: Optimist

7. **COURSES**

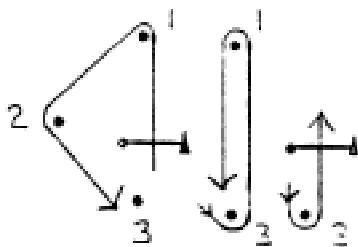
- 7.1 The PHRF course shall be signaled by letters displayed on the R.C. boat, giving the order in which marks are to be rounded / passed. The color of the letter will indicate the side on which the mark is to be left. Refer to the club course chart for approximate locations of club marks in Bellport and Patchogue Bays. PHRF boats shall always pass south of G#1 Fl G 4s when entering and leaving Bellport Bay during racing. On windward leeward courses leave course marks to port.
- 7.2 The four diagrams below show courses for **Group 1**, one-design boats, the order in which marks are to be rounded or passed, and the side on which each mark is to be left.
- 7.3 **Group 2 and 3 boats** have their own racecourses. See supplemental sailing instructions.



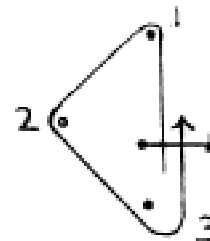
Start-1-2-3-1-3-1-3-Finish
COURSE A



Start-1-2-3-1-2-3-1-3-Finish
COURSE B



Start-1-2-3-1-3-Finish
COURSE C



Start-1-2-3-Finish
COURSE D

The corresponding course to be sailed will be displayed on the Race Committee Boat prior to the Warning Signal.

8. MARKS

8.1 Marks for PHRF will be orange and white club barrels for A, B, and H, and government marks

Bellport Bay

C = R #6
D = R #4
E = R #2
F = G #1 F1 4s

Patchogue Bay

G = R #38
I = G #37
J = R 36
K = G #1 1Qk F1 G
L = R #4 (Patchogue River Channel)

8.2 Marks 1, 2 and 3 for other than PHRF classes racing in the center of the bay will be large orange inflatable cylinders.

9. START/FINISH

Races for the following Classes will be started in accordance with racing Rule 26.

: 00:00 Warning (Class Flag)
: 01:00 Preparatory
: 04:00 One Minute
: 05:00 Start

Class Flag, (Code Flag)

Class Flag for	PHRF Spinnaker and Non Spinnaker	Code Flag	#1
Class Flag for	Narrasketuck will be	Code Flag	#2
Class Flag for	Mono-hull Handicap and Flying Scotts will be	Code Flag	#3
Class Flag for	Sunfish will be	Code Flag	#4
Class flag for	Tornado will be	Code Flag	#5
Class flag for	Multi-hull Handicap will be	Code Flag	#6

9.3 The start and finish line for the above mentioned classes will be between a staff displaying an orange flag on the race committee boat and the course side of the orange inflatable starting mark.

9.4. Boats whose warning signal has **not** been made shall keep clear of the starting area while others are starting.

9.6. A boat starting more than 20 minutes after her starting signal will be scored DNS this modifies A4.1

10. RECALLS

10.1 Recalls for one or more boats will be signaled by code flag "X" (BLUE CROSS ON WHITE FIELD) and one sound signal. The Committee will endeavor to notify each boat recalled by hailing its number, but it is the responsibility of each boat to make a proper start. The "X Flag" will be lowered when all boats are deemed "clear", or 1 minute before the next start, whichever is earlier.

10.2. General Recalls will be signaled by code flag "First Substitute" (BLUE AND YELLOW PENNANT) with 2 sound signals. The "First Substitute Flag" will be lowered 1 minute before the next Warning Signal for the recalled class. The starts for the succeeding classes will be postponed accordingly, maintaining their same Class Flag sequence.

11. SHORTEN COURSE

Code flag "S" (BLUE SQUARE ON WHITE FIELD) with 2 sound signals means SHORTEN COURSE. The Committee may shorten course after the start by finishing the race at any rounding mark. The finish will be between the mark and a boat displaying the "S" flag.

12. WITHDRAWAL

Boats withdrawing shall make every effort to report to the race committee, patrol boat, or race committee representative at the yacht club as soon as possible.

13. TIME LIMIT

- 13.1. The PHRF spinnaker and Non spinnaker time limit will be 2 1/2 hours for the first boat to finish in their class and 30 minutes after the first boat finishes, for all other boats in that class to finish.
- 13.2. The time limit for all other classes will be 2 1/4 hours for the first boat to finish in each class and 30 minutes after the first boat finishes for all other boats in that class to finish.
- 13.3. Classes failing to have a boat finish within the time limit or boats failing to finish within their time limits will be scored DNF. This modifies Appendix A4.

14. PROTESTS

- 14.1. Protests shall be written on forms available from the Race Committee and lodged with the Race Committee within Protest Time, which will begin when the **Code Flag "B"** has been hoisted on **the Flagpole in front of the Club** and end **1 hour** later.
- 14.2. Protest notices will be posted within 30 minutes of the protest time limit to inform competitors where and when the hearing in which they are parties to a protest or named as witnesses will be.
- 14.3. The protest committee will hear protests in approximately the order of receipt as soon as possible.

15. SCORING

- 15.1. The Low Point Scoring System, Appendix A, will apply, and each yacht's total score will be the sum of her scores for all races.
- 15.2. No score will be calculated for any unregistered boat, or any boat not displaying proper sail numbers and streamers as required.
- 15.3. Boats that do not compete, or do not start, or start prematurely, or do not finish, or retire after finishing, or are disqualified will be scored one more point than the number of boats entered in the series.
- 15.4. All Races will be scored. This modifies Appendix A2.
- 15.5. When there is a tie for total points between two or more boats, the tie will be broken in favor of the boat or boats with the most first places, and when the tie remains, the most second places, and so on. When the tie still remains, Rule A8.2 will be used.

16. PRIZES

Prizes will be awarded after the last race on Monday the 6th. Prizes will be awarded for classes when 3 or more boats are registered and participate in that class.

Group 1boats are: PHRF spinnaker and non spinnaker, Narrasketuck, Mono-hull Handicap, Flying Scotts, Sunfish and Multi-hull Handicap.

Group 2 boats are: 420s, Lasers, Laser Radials and JY15s

Group 3 boats are: Optimist